



FLOW TABLE APPARATUS

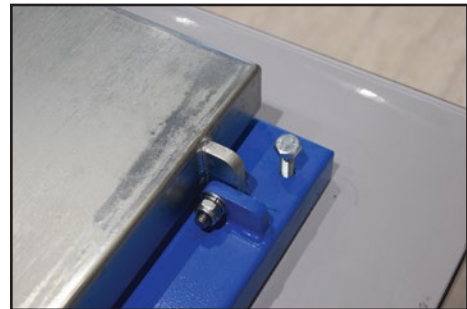
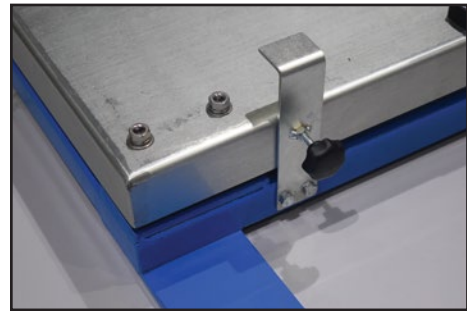
Standard: UNI 8020-B, DIN 1048,
BS 1881-105, EN 12350-5

Workability & Consistency

Used to determine the workability of fresh concrete. This apparatus comprises a steel flow table, conical mould and wooden tamper.

Technical Specifications :

Model Number	NL 4003 X / 003
Table Dimension (mm)	880 (L) x 700 (W) x 140 (H)
Table Material	Steel Plated
Approx. Weight	30 kg



Unit Consists For NL 4003 X / 003

Model Number	Parts Description	Qty
NL 4003 X / 001 – P 001	Conical Mould Dia. 130/200 x H 200 mm	1 no.
NL 4003 X / 001 – P 002	Wooden Tamper	1 no.
NL 4003 X / 001 – P 003	Plated Flow Table	1 no.

*1 Copy of Manual Instruction